



dormakaba terminal 97 00:

Time recording and
staff communication
at its best



The terminal 97 00 can be integrated in your company without any difficulty – and becomes readily indispensable.

Perfection in form and function – and just as made for you

Elegant, versatile, needs-based – these are characteristics of the customisable high-tech terminal 97 00 with proximity sensor. The modular extendable all-rounder combines efficient time recording and modern staff communication. Everything in one device. Everything tailored to the needs of your company. Everything very easy.

The terminal 97 00 sets benchmarks for functionality and design. And optimally adapts to the needs of your company. Experience time recording and staff communication at its best. Experience the terminal 97 00

The user interface is freely configurable – for instance in individual corporate design. Even multimedia content like training films, company-related apps and employee info can easily be integrated.

With the text-to-speech function, the function key texts are spoken out loud. This helps visually impaired people with a secure and error-free operation of the terminal. Strong additional options like biometric reader or camera system hardly leave any wish unfulfilled.

High-tech with many highlights – features and benefits at a glance

Bright 7" touchscreen

for intuitive operation

Robust, scratch-proof and shock-resistant glass screen

for elegant look and durability

Visual operational help

The respective active function appears in colour

Smart proximity sensor

for increased energy efficiency

Multi RFID reader

for contactless identification

Optional multi RFID reader with BLE

for comfortable booking with a smartphone

Optional biometric reader

for convenient and unique identification

Freely configurable user interface

for individual icons and content

Integration of apps

for company-specific requirements with HTML5 support





WiFi and mobile communication connection

for wireless data transfer

Modern design

easy to design with own logo and CI

Multi-lingual user guide

for intuitive operation by your staff

CardLink function

for easy integration of
offline door components

Thousand-fold proven software

for a reliable operation

PoE, 24 V DC or 230 V AC

for a universal power supply

Compatible with previous versions

for a problem-free upgrade

Text-to-speech

Spoken function key text for
helping visually impaired operators

Loudspeaker and microphone

for barrier-free design and multimedia content

with freely
configurable user
interface



01

Standard interface
(ex works)

02

Interface with
white background

03

Interface with
company-specific
background image

04

Freely configured
interface in
corporate identity

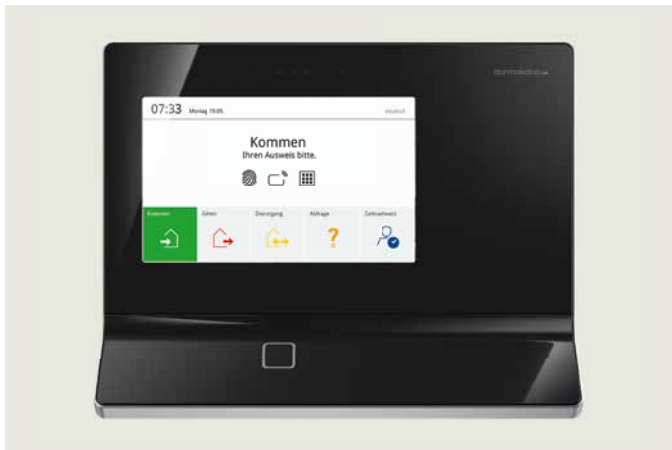
05

Presentation of the
company's image film

Maximum design freedom – your chosen look and acoustics

The terminal 97 00 makes a statement with its looks and beyond. Even the user interface is convincing with attractive, modern design. Would you rather like to choose the look yourself? No problem. The user interface is freely configurable, and with a few simple steps, it appears as individual as your company.

Various standard layouts are supplemented with more than 250 freely selectable icons in different colours – leaving no design wish unfulfilled. Be it your own colours, background images, logo, symbols, signal tones, the language output or multimedia content – you decide how your terminal should look and sound.



02



03



04



05

Ready to go in no time – thanks to easy installation and commissioning

Simply kick off:

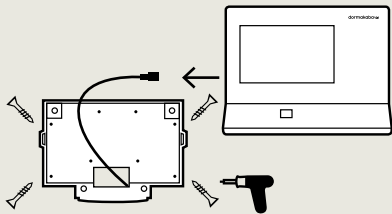
- Network integration via Ethernet port
- Power supply optionally with Power over Ethernet (PoE), 24 V DC or 230 V AC
- Supports common RFID media
- Compatible with previous series



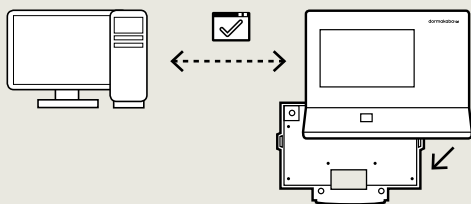
Quick and easy commissioning

The docking station supplied enables fast, easy and reliable installation. It's as simple as this:

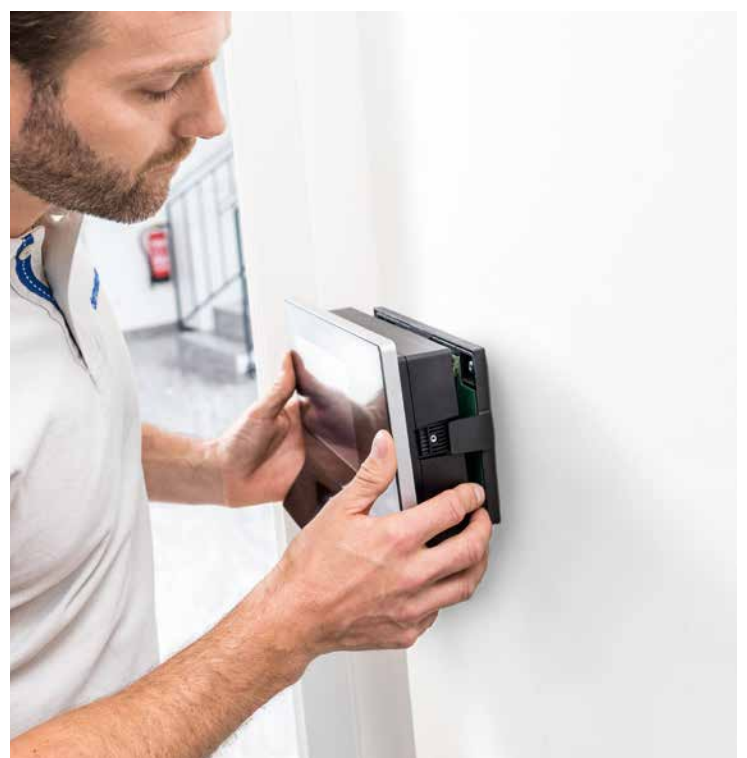
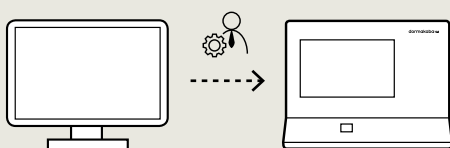
1. Fix docking station on the wall and connect the pre-installed network cable



2. Dock on terminal for automatic network registration



3. User-friendly configuration



Smartphone instead of RFID card



Simply book with smartphone: the optional function for Mobile Access makes it possible. Recording working hours and opening doors with a smartphone* – that is popular with most of the staff. The RFID card is sometimes forgotten, but your staff always has their smartphone with them. Therefore, using the smartphone as registration medium at the terminal – or as a complete registration station for time recording – reduces the correction bookings piling up in HR and thus reduces your effort for managing and issuing RFID cards. And smartphones being very personal objects, they are not handed over to other colleagues for use.

* Scope of functions depends on the dormakaba system solutions used



Biometric reader



With the optional biometric reader, the finger becomes the personal RFID card which you carry at all times. Just press the finger briefly to the reader, and you are reliably identified. Tip: For more security, the biometric identification can also be combined with a standard RFID reader or a PIN input.

All options and packages at a glance

9700-K6	Option package 97 20	Option package 97 40	Option package 97 60
Device software			
B-client HR30	●	●	●
Reader			
Multi RFID reader (LEGIC/MIFARE) with BLE	●	●	●
HID iClass SE proximity reader	○	○	○
Other RFID readers ²	○	○	○
Biometric reader for 500/3,000/5,000 persons ³	○	○	○
Magnetic stripe reader ²	○	○	○
Barcode CCD scanner	○	○	○
Host interface			
10/100/1,000 Ethernet interface (IPv4)	●	●	●
WLAN	○	○	○
Mobile communication	○	○	○
Power supply			
Power over Ethernet	●	●	●
24 V DC ⁴	○	○	○
100 V–230 V AC ⁴	○	○	○
Power supply without interruption	○	○	●
Options			
Door control	○	●	●
Data encryption	●	●	●
CardLink	○	●	●
Camera system ³	○	○	●
Mobile Access – booking with a smartphone	○	○	○
Storage options			
200 persons	●	–	–
1,000 persons	○	–	–
2,000 persons	○	●	–
10,000 persons	○	○	●
Design			
Docking station	●	●	●
Elastic protective frame	○	○	○
Increased class of protection IP54	○	○	○
Flush-mounted housing	○	○	○
Mounting plate	○	○	○

Standard ●
Option ○
Not possible –

Note: The scope of effectively available product functions depends on the context in which the system is used.



**Door
Hardware**



**Electronic
Access & Data**



**Mechanical
Key Systems**



Lodging Systems



**Entrance
Systems**



**Interior Glass
Systems**



Safe Locks



Service

dormakaba
International Holding AG
Hofwisenstrasse 24
CH-8153 Rümlang
T +41 44 818 90 11
info@dormakaba.com
www.dormakaba.com